

RESEARCH ARTICLE

# Methylation-Sensitive Expression of a DNA Demethylase Gene Serves As an Epigenetic Rheostat

Ben P. Williams<sup>1</sup>, Daniela Pignatta<sup>1</sup>, Steven Henikoff<sup>2</sup>, Mary Gehring<sup>1,3\*</sup>

**1** Whitehead Institute for Biomedical Research, Cambridge, Massachusetts, United States of America, **2** Howard Hughes Medical Institute, Fred Hutchinson Cancer Research Center, Seattle, Washington, United States of America, **3** Department of Biology, Massachusetts Institute of Technology, Cambridge, Massachusetts, United States of America

\* [mgehring@wi.mit.edu](mailto:mgehring@wi.mit.edu)



**OPEN ACCESS**

**Citation:** Williams BP, Pignatta D, Henikoff S, Gehring M (2015) Methylation-Sensitive Expression of a DNA Demethylase Gene Serves As an Epigenetic Rheostat. *PLoS Genet* 11(3): e1005142. doi:10.1371/journal.pgen.1005142

**Editor:** Ortrun Mittelsten Scheid, Gregor Mendel Institute of Molecular Plant Biology, AUSTRIA

**Received:** December 15, 2014

**Accepted:** March 11, 2015

**Published:** March 31, 2015

**Copyright:** © 2015 Williams et al. This is an open access article distributed under the terms of the [Creative Commons Attribution License](https://creativecommons.org/licenses/by/4.0/), which permits unrestricted use, distribution, and reproduction in any medium, provided the original author and source are credited.

**Data Availability Statement:** All relevant data are within the paper and its Supporting Information files.

**Funding:** This work was funded by the Pew Charitable Trust's Pew Biomedical Scholars award and the Alexander and Margaret Stewart Trust's Scholars award to MG. The funders had no role in study design, data collection and analysis, decision to publish, or preparation of the manuscript.

**Competing Interests:** The authors have declared that no competing interests exist.

## Abstract

Genomes must balance active suppression of transposable elements (TEs) with the need to maintain gene expression. In *Arabidopsis*, euchromatic TEs are targeted by RNA-directed DNA methylation (RdDM). Conversely, active DNA demethylation prevents accumulation of methylation at genes proximal to these TEs. It is unknown how a cellular balance between methylation and demethylation activities is achieved. Here we show that both RdDM and DNA demethylation are highly active at a TE proximal to the major DNA demethylase gene *ROS1*. Unexpectedly, and in contrast to most other genomic targets, expression of *ROS1* is promoted by DNA methylation and antagonized by DNA demethylation. We demonstrate that inducing methylation in the *ROS1* proximal region is sufficient to restore *ROS1* expression in an RdDM mutant. Additionally, methylation-sensitive expression of *ROS1* is conserved in other species, suggesting it is adaptive. We propose that the *ROS1* locus functions as an epigenetic rheostat, tuning the level of demethylase activity in response to methylation alterations, thus ensuring epigenomic stability.

## Author Summary

Organisms must adapt to dynamic and variable internal and external environments. Maintaining homeostasis in core biological processes is crucial to minimizing the deleterious consequences of environmental fluctuations. Genomes are also dynamic and variable, and must be robust against stresses, including the invasion of genomic parasites, such as transposable elements (TEs). In this work we present the discovery of an epigenetic rheostat in plants that maintains homeostasis in levels of DNA methylation. DNA methylation typically silences transcription of TEs. Because there is positive feedback between existing and *de novo* DNA methylation, it is critical that methylation is not allowed to spread and potentially silence transcription of genes. To maintain homeostasis, methylation promotes the production of a demethylase enzyme that removes methylation from gene-proximal regions. The demethylation of genes is therefore always maintained in concert with the

levels of methylation suppressing TEs. In addition, this DNA demethylating enzyme also represses its own production in a negative feedback loop. Together, these feedback mechanisms shed new light on how the conflict between gene expression and genome defense is maintained in homeostasis. The presence of this rheostat in multiple species suggests it is an evolutionary conserved adaptation.

## Introduction

In plants, animals, and fungi, DNA methylation is used to repress the transcription of potentially harmful DNA sequences [1]. Targets include long transposable elements (TEs) that have intact open reading frames and primarily reside in heterochromatin and shorter TE fragments that are prevalent in euchromatic gene-rich regions. In plants, DNA methylation is dynamically regulated during development and in response to external perturbations. Many of these changes occur at TEs or TE-derived sequences. Examples include modest DNA methylation changes in gene-proximal regions upon exposure to bacteria or bacterial elicitors [2,3] and DNA demethylation of TEs in the 5' regions of stress response genes during fungal infection [4]. Dynamic methylation changes have also been implicated in the regulation of genes in response to abiotic signals [5,6]. Furthermore, DNA methylation is dynamic during reproductive development. DNA demethylation in the female gametophyte is important for establishing gene imprinting in the endosperm after fertilization [7]. During male gametogenesis, the sperm become hypomethylated in certain sequence contexts [8]. Similar to other dynamic changes, the removal of methylation in gametophytes occurs largely at TE fragments in euchromatin.

DNA methylation patterns are a product of methylation and demethylation activities, but how these opposing activities are balanced in the genome is unknown. In plants, DNA methylation is established and maintained in different cytosine sequence contexts by genetically distinct pathways. Euchromatic TEs in *Arabidopsis* and maize are primarily targeted for cytosine methylation through the process of RNA-directed DNA methylation (RdDM), which results in cytosine methylation in all sequence contexts (CG, CHG, and CHH, where H represents any base other than G) [1,9]. This process is initiated by transcription of non-coding RNAs by a specialized RNA polymerase unique to plants, RNA Pol IV. These non-coding RNAs are then converted into dsRNAs by the RNA-dependent RNA polymerase RDR2. Small 24 nt RNAs generated from these transcripts are then loaded into AGO4. The small RNAs are thought to interact with non-coding transcripts that are generated by a second plant-specific polymerase, RNA Pol V [10], resulting in the recruitment of the *de novo* methyltransferase DRM2 and sequence-specific DNA methylation. 21–22 nt small RNAs generated through an RDR6-dependent pathway can also direct *de novo* methylation independently of RNA Pol IV [11,12]. Positive feedback between existing and *de novo* DNA methylation reinforces silencing [13,14]. Maintenance of asymmetric CHH methylation requires continual *de novo* methylation by RdDM. Other processes maintain DNA methylation in the CG and CHG sequence context. CG DNA methylation is maintained by the maintenance methyltransferase MET1 in conjunction with VIM methyl-binding proteins. CHG methylation is maintained by CMT3 and is positively reinforced by histone H3K9 dimethylation [15]. By contrast, TEs in heterochromatic sequences are methylated by CMT2 with the assistance of the nucleosome remodeler DDM1 [16,17].

Because there is positive feedback between methylation and further RdDM activity and because many RdDM targets are near genes, it is important that mechanisms are in place to

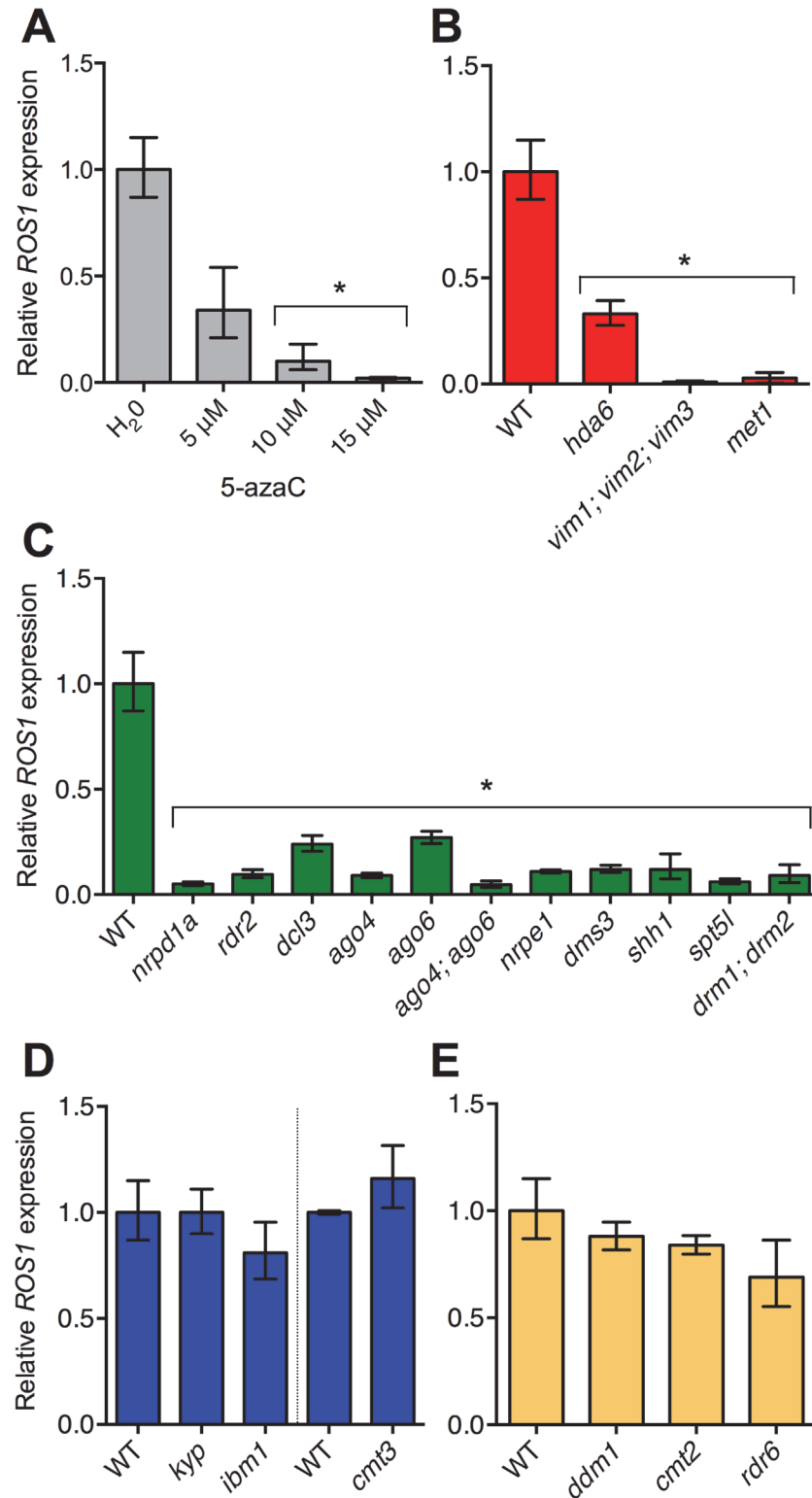
protect genes from potentially detrimental hypermethylation. In the Arabidopsis genome, 44% of genes have a TE within 2 kb of the transcribed region [18], potentially creating a conflict between TE suppression by RdDM and gene expression. DNA methylation is opposed by 5-methylcytosine DNA glycosylases that remove methylcytosine from DNA by base excision repair. Plants with mutations in the three DNA glycosylases expressed in somatic tissues, *ROS1*, *DML2*, and *DML3*, gain methylation in all sequence contexts in gene proximal regions, primarily around TEs and TE-derived sequences [19,20]. DNA demethylation is therefore important to protect genes from RdDM spreading. This has been demonstrated at several loci. For example, the *EPF2* gene, which is associated with a methylated TE approximately 1.5 kb 5' of its transcriptional start site, gains methylation in the region between the TE and 5' end of the gene in *ros1 dml2 dml3* mutants, resulting in transcriptional silencing [21]. Although DNA methylation is primarily thought of as repressive to transcription [20,22], expression of the DNA demethylase gene *ROS1* is unexpectedly reduced in some DNA methylation mutants [23–26]. Whether this is a direct or indirect effect has not been demonstrated. These observations on *ROS1* expression form the basis of our study.

Here we describe the existence of a rheostat for genomic methylation activity. We find that RdDM and DNA demethylation activities converge on TE-derived sequences 5' of *ROS1*. In contrast to other genomic targets of these pathways, expression of *ROS1* is promoted by the RdDM pathway and inhibited by demethylation by *ROS1*. Thus the *ROS1* locus functions as a self-regulating epigenetic rheostat, balancing input from both DNA methylation and demethylation to maintain homeostasis between these opposing systems.

## Results

### RNA-directed DNA methylation promotes *ROS1* expression

Previous studies have shown that *ROS1* expression is reduced in mutants in which DNA methylation is disrupted or altered [23–26]. Additionally, expression of the *ROS1* gene is significantly reduced when plants are grown on the methyltransferase inhibitor 5-aza-2-deoxycytidine (5-azaC) [24] (Fig 1A). Here we systematically evaluated which DNA methylation pathways promote *ROS1* expression by performing RT-qPCR on multiple Arabidopsis mutants that directly or indirectly alter DNA methylation. *met1* plants have pleiotropic methylation phenotypes; methylation in CG, CHG and CHH sequence contexts is reduced genome-wide in combination with local regions of non-CG hypermethylation [20]. We observed extremely low levels of *ROS1* transcripts in *met1* and *vim* seedlings (Fig 1B), as has been reported previously [23,24]. An approximately ten-fold decrease in *ROS1* transcript levels was observed in eleven different RdDM mutants (Fig 1C), consistent with previous findings that *ROS1* expression is reduced in *rdr2*, *nrdp1a*, *nrpe1*, *drd1*, and *drm2* mutants [23,25]. RdDM is predominantly associated with transcriptional repression; therefore transcriptional activation of *ROS1* by RdDM potentially represents an under appreciated function for this pathway. Transcripts from the related 5-methylcytosine DNA glycosylases *DML2* and *DML3* are present at much lower levels than *ROS1* in wild-type tissues (S1 Fig). Mutations in the RdDM pathway do not alter the transcript abundance of *DML2*, and result in small reductions in *DML3* (S1 Fig). No significant changes to *ROS1* transcript abundance were observed in CHG methyltransferase mutants (Fig 1D), in mutants of key regulators of histone H3K9 methylation (Fig 1D), which is tightly associated with CHG methylation [27], in plants with mutations in genes required to establish non-CG methylation in heterochromatin [16,17] (Fig 1E), or in plants with a mutation in the *RDR6* gene, which can trigger *de novo* methylation independently of the canonical RdDM pathway [11,12] (Fig 1E). Thus, *ROS1* down-regulation in methylation mutants is restricted to mutations in *MET1* and its cofactors, and mutations in the RdDM pathway.



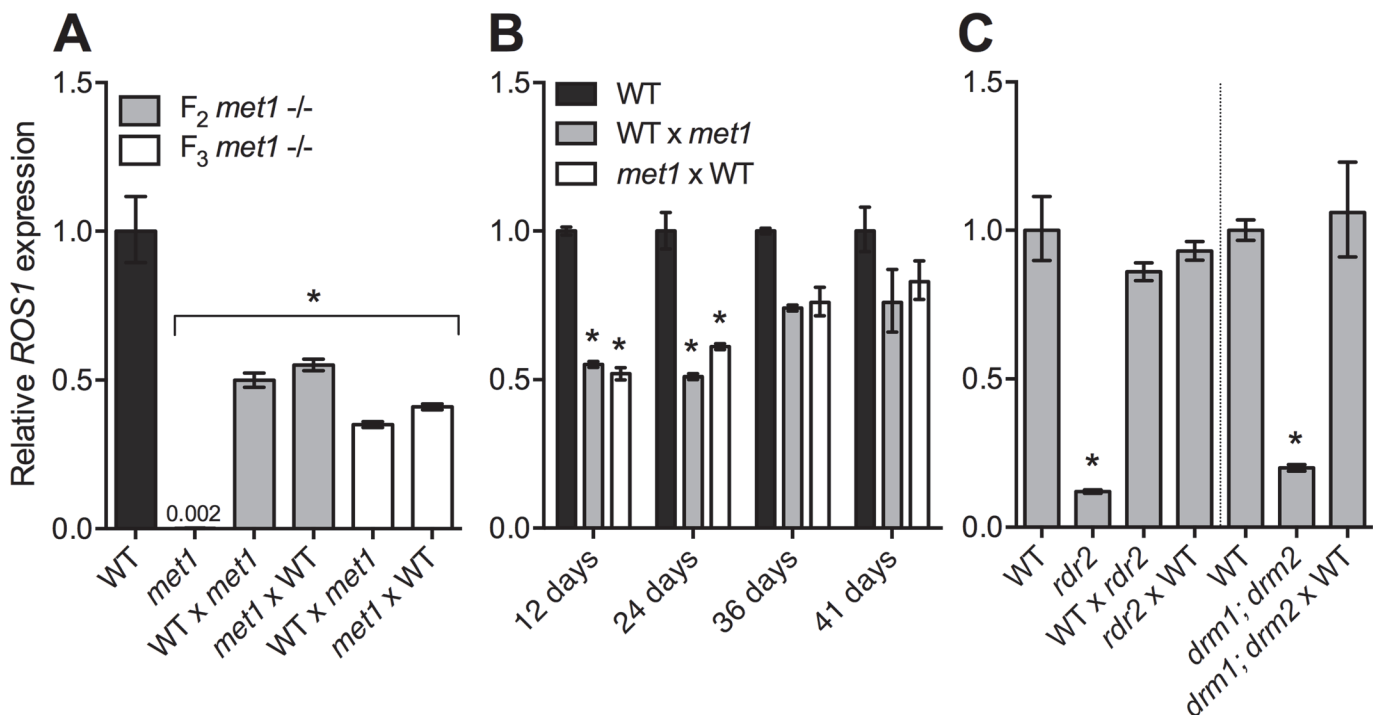
**Fig 1. RdDM pathway mutants have reduced *ROS1* expression.** (A) Relative *ROS1* transcript abundance was measured using RT-qPCR on *A. thaliana* seedlings that were grown on medium supplemented with water or 5–15 μM 5-aza-2-deoxycytidine (5-azaC). Relative *ROS1* transcript levels were also quantified in multiple mutants of each of the major DNA methylation pathways in Arabidopsis including: (B) the maintenance methylation pathway, (C) the RdDM pathway, (D) the CHG/H3K9 methylation pathway and (E)

the heterochromatin DNA methylation pathway, or post-transcriptional silencing. WT represents Col-0 in all cases, except for *cmt3*, *met1* and *drm1*; *drm2*, where the comparative wild-type strains used were *Ler*, *Col-gl* and *Ws-2*, respectively. Data represented as mean, error bars represent standard deviation. \**p* = <0.001, two-tailed t-test.

doi:10.1371/journal.pgen.1005142.g001

To test if *ROS1* silencing in *met1* or RdDM mutants was heritable, we crossed *met1*, *rdr2*, and *drm1*; *drm2* plants to wild type and evaluated *ROS1* expression in heterozygous F<sub>1</sub> progeny. *ROS1* expression remained reduced in *MET1/met1* F<sub>1</sub> progeny at levels about half that of wild type plants, regardless of whether the *met1* plant served as the male or female parent in the cross (Fig 2A). This suggests that the *ROS1* allele inherited from the *met1* parent remained silenced through meiosis. However, *ROS1* expression was gradually restored as *MET1/met1* progeny developed (Fig 2B). Thus, erasure of *met1*-induced epigenetic changes and restoration of normal regulatory mechanisms at *ROS1* likely takes place over multiple cell divisions. By contrast, *ROS1* transcripts were restored to wild-type levels in F<sub>1</sub> progeny of RdDM mutants crossed to wild type (Fig 2C).

Recently it has been shown that reduced expression of the histone demethylase gene *IBM1* contributes to reduced *ROS1* expression in *met1* mutants [26]. However, we found that *ROS1* expression is not reduced in *ibm1* mutants (Fig 1D), nor is *IBM1* expression reduced in the RdDM mutants *rdr2* and *nrdp1a* (RNA Pol IV) (S2 Fig), suggesting that the decreased expression of *ROS1* expression in RdDM mutants is *IBM1*-independent. Together these data indicate that the down-regulation of *ROS1* observed in *met1* and RdDM mutants represents distinct



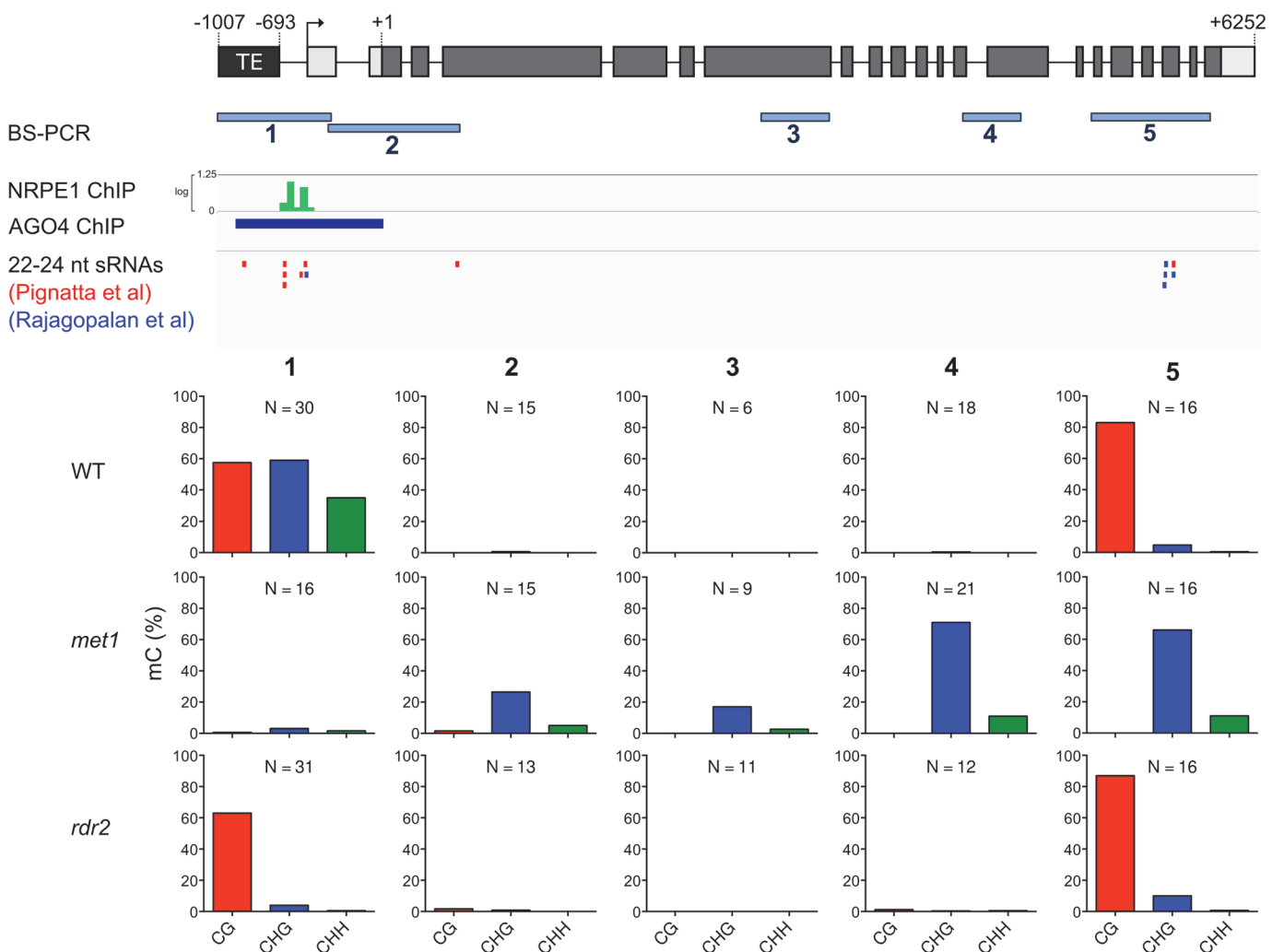
**Fig 2. *ROS1* down-regulation in RdDM mutants is not heritable through meiosis.** Relative *ROS1* transcript abundance was measured in (A) 12 day-old seedlings of F<sub>1</sub> progeny of homozygous *met1* mutants crossed as either males or females to WT (*met1* parents were either from the F<sub>2</sub> or F<sub>3</sub> generation, indicating the first and second generation as homozygous *met1* plants, respectively), (B) at different stages during the growth of the *MET1/met1* F<sub>1</sub> plants (12 day-old seedlings, 24 day-old rosette leaves and 36 and 41 day-old flower buds) and (C) in seedlings of F<sub>1</sub> progeny of *rdr2* and *drm1*; *drm2* crossed to WT. WT represents *Col-gl*, *Col-0*, and *Ws-2* for *met1*, *rdr2*, and *drm1*; *drm2* respectively. For crosses, females are written first. Data represented as mean, error bars represent standard deviation. \**p* = <0.001, two-tailed t-test.

doi:10.1371/journal.pgen.1005142.g002

processes, which was further supported by methylation profiling of *ROS1* in different mutant backgrounds, described below.

### RdDM is highly active at a TE 5' of *ROS1*

To determine if the *ROS1* locus is targeted directly by DNA methylation, we performed bisulfite PCR and sequencing of the entire *ROS1* gene and 1 kb of 5' flanking sequences (Fig 3, S3 Fig). In wild-type plants we identified two small regions where cytosines were methylated in CG, CHG, and CHH sequence contexts (a hallmark of RdDM): a 228 bp region partially overlapping an AtREP5 Helitron TE directly upstream of *ROS1*, and in sequences encoding exons 15–18 (Fig 3). Genome-wide chromatin-IP datasets [10,28] showed that peaks of the RdDM proteins NRPE1 (RNA Pol V) and AGO4 were present 5' of the *ROS1* start codon, overlapping the nearby TE (Fig 2). This is the same region where an RNA Pol V transcript has been detected [10]. There were high levels of CHH methylation in this region, predominantly on the top strand (Fig 2, S3 Fig),



**Fig 3. *ROS1* is an RdDM target.** Methylation of the entire *ROS1* locus was examined in wild-type by bisulfite sequencing. Bisulfite sequencing from WT (Col-0 and Col-g), *met1*, and *rdr2* rosette leaves is shown for five regions. The activity of RNA Pol V (NRPE1-ChIP [28]), and AGO4 (AGO4-ChIP [10]) is shown in tracks below the *ROS1* locus. 22–24 nucleotide small RNAs matching *ROS1* were identified from two published datasets [29,30]. N represents the number of independent clones sequenced for each bisulfite PCR product.

doi:10.1371/journal.pgen.1005142.g003

and we identified multiple 24 nucleotide small RNAs directly matching this sequence from published datasets (Fig 3) [29,30]. In addition, we detected multiple small RNAs matching the methylated exons within the *ROS1* coding region, but these did not overlap with peaks in the AGO4 or NRPE1 ChIP datasets, consistent with the low levels of CHH methylation in this region (Fig 3). To determine the proximity of the 5' methylated region to the *ROS1* transcriptional start site (TSS), we performed 5' RACE using RNA from wild-type Col-0 seedlings and identified two transcription start sites, 26 and 442 bp 5' of the *ROS1* start codon (S3 Fig), the latter of which is within 100 bp of the methylated region.

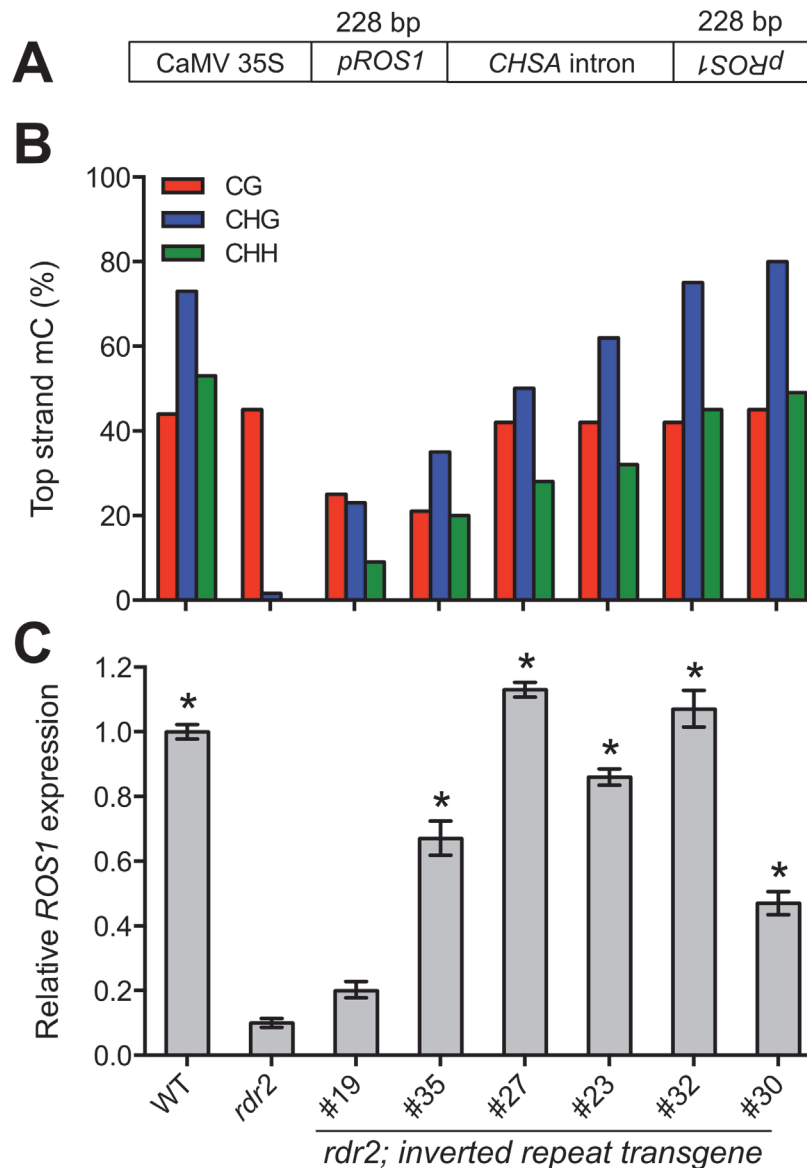
We also profiled *ROS1* methylation in *met1* and *rdr2* mutants. CG methylation was eliminated in *met1*, but the *ROS1* coding region was hypermethylated in the CHG context (Fig 2), as has been previously reported [26]. We did not observe any evidence for coding region hypermethylation in *rdr2* mutants. Instead, there was a clear reduction in non-CG methylation 5' of the *ROS1* TSS in *rdr2* plants, as typically occurs when RdDM activity is lost (Fig 3, S3 Fig). Thus the TE at the 5' end of *ROS1* is the most likely candidate as the site of RdDM activity that promotes *ROS1* expression, despite the fact that methylated TEs 5' of genes are typically associated with transcriptional repression [18,20,21]. Combined with the distinct behavior of *ROS1* alleles inherited from *met1* or *rdr2* parents (Fig 2), we propose that the RdDM pathway acts to promote *ROS1* expression via a different mechanism than does the MET1 pathway.

### Methylation 5' of *ROS1* is sufficient to restore *ROS1* expression in *rdr2* mutants

Although our results suggest that *ROS1* expression is positively correlated with DNA methylation at the *ROS1* locus, reduced expression of *ROS1* in RdDM mutants could be direct or indirect, for example due to altered expression of a *ROS1* regulator. To distinguish between these possibilities we sought to restore DNA methylation at the *ROS1* 5' region in an *rdr2* mutant background and then observe the effect on *ROS1* expression. We attempted to bypass the inability of the *rdr2* mutant to make a dsRNA that initiates RdDM by expressing an inverted repeat transgene under the control of the constitutive 35S promoter in *rdr2* mutants (Fig 4A). Transcription of inverted repeat transgenes creates a double-stranded hairpin RNA that can be processed into small RNAs that direct DNA methylation [31]. We used inverted repeats corresponding precisely to the 228 bp *ROS1* 5' region that is methylated in wild type. We screened *rdr2* T<sub>1</sub> plants for methylation of the *ROS1* 5' region and focused on six lines for in-depth analysis of DNA methylation by bisulfite sequencing (Fig 4B). Methylation in each of the six lines was restored to varying degrees, constituting an epiallelic series, with some lines exhibiting a methylation profile strikingly similar to wild type. Methylation occurred in all sequence contexts, indicative of RNA-directed DNA methylation. *ROS1* expression was examined in leaves of each independent line by RT-qPCR (Fig 4C). Remarkably, *ROS1* expression was restored in *rdr2* mutants when methylation of the 5' region was restored. In a transgenic line with limited restoration of DNA methylation (line #19), *ROS1* expression increased only marginally in *rdr2* mutants (Fig 4C). These data demonstrate that methylation of the 5' sequence is sufficient to promote *ROS1* expression, and eliminate the possibility that decreased expression of *ROS1* in *rdr2* mutants is caused by an indirect mechanism.

### *ROS1* directly opposes RdDM to repress *ROS1* expression

We noticed that cytosines in the CG context 5' of *ROS1* were intermediately methylated at around 50% in wild-type tissues, with independent variance at every CG position in the sequence (Fig 3, S3 Fig). CG methylation is faithfully copied by MET1 during DNA replication, and so average methylation at symmetric CG sites is usually close to 0 or 100% [20]. The

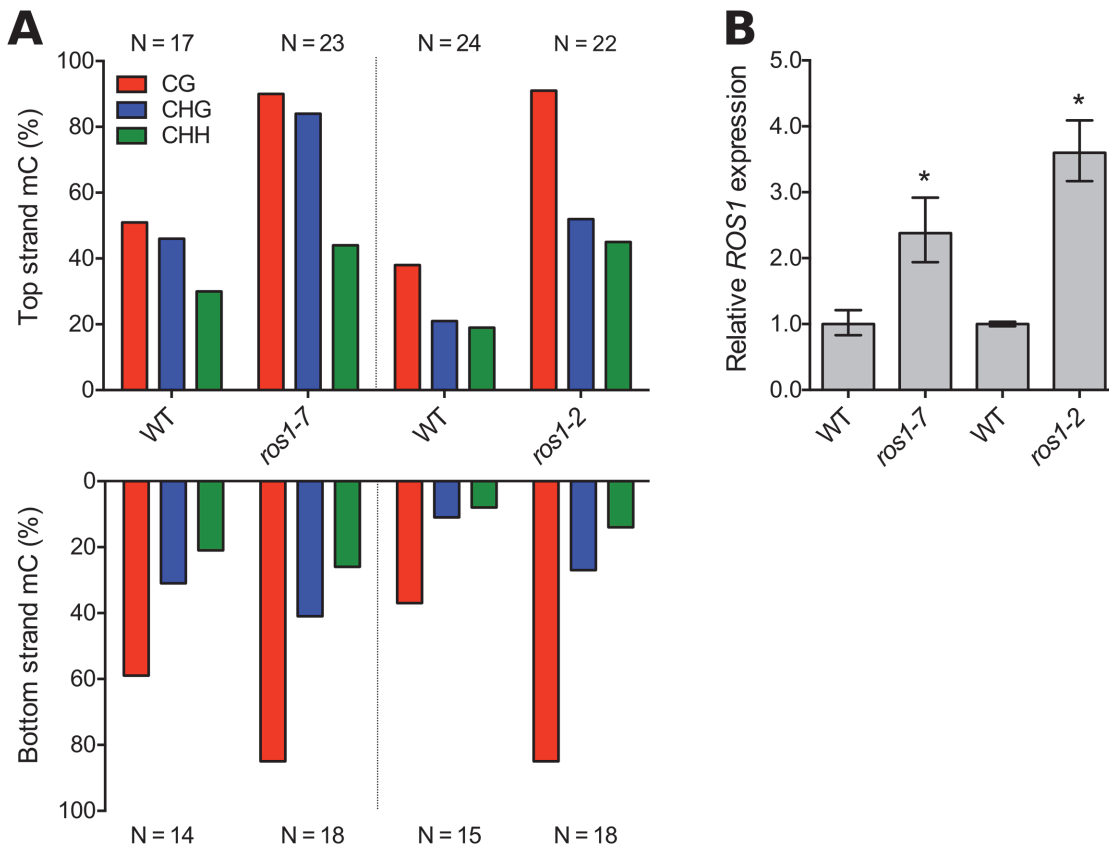


**Fig 4. Restoration of methylation 5' of *ROS1* is sufficient to restore *ROS1* expression in *rdr2* mutants.** (A) The inverted repeat construct used to express double stranded RNA matching the *ROS1* 5' region (*pROS1*) in *rdr2* mutants. CaMV 35S: Cauliflower mosaic virus 35S promoter; *CHSA*: chalcone synthase. (B) Methylation from -595 to -534 bp before the translational start site of *ROS1* in WT (Col-0), *rdr2* mutants and six independent transgenic lines expressing the inverted repeat transgene in an *rdr2* background. (C) Quantification of *ROS1* expression in WT, *rdr2*, and each of the transgenic lines. \**p* = <0.001 compared to *rdr2*, two-tailed t-test.

doi:10.1371/journal.pgen.1005142.g004

observed intermediate level of CG methylation and the low frequency of bisulfite clones fully methylated in the CG context (S3 Fig) suggested that active DNA demethylation might also be active at the 5' sequence. We hypothesized that *ROS1* might oppose RddM to remove methylation at its own promoter. We performed bisulfite sequencing of the 5' methylated region in two missense mutants of *ROS1*, *ros1-2* [32] and *ros1-7*, an allele encoding a protein with an E956K substitution in the *ROS1* DNA glycosylase domain [33]. Symmetric CG methylation increased to nearly 100% in both mutants compared to their wild-type siblings, along with increases in





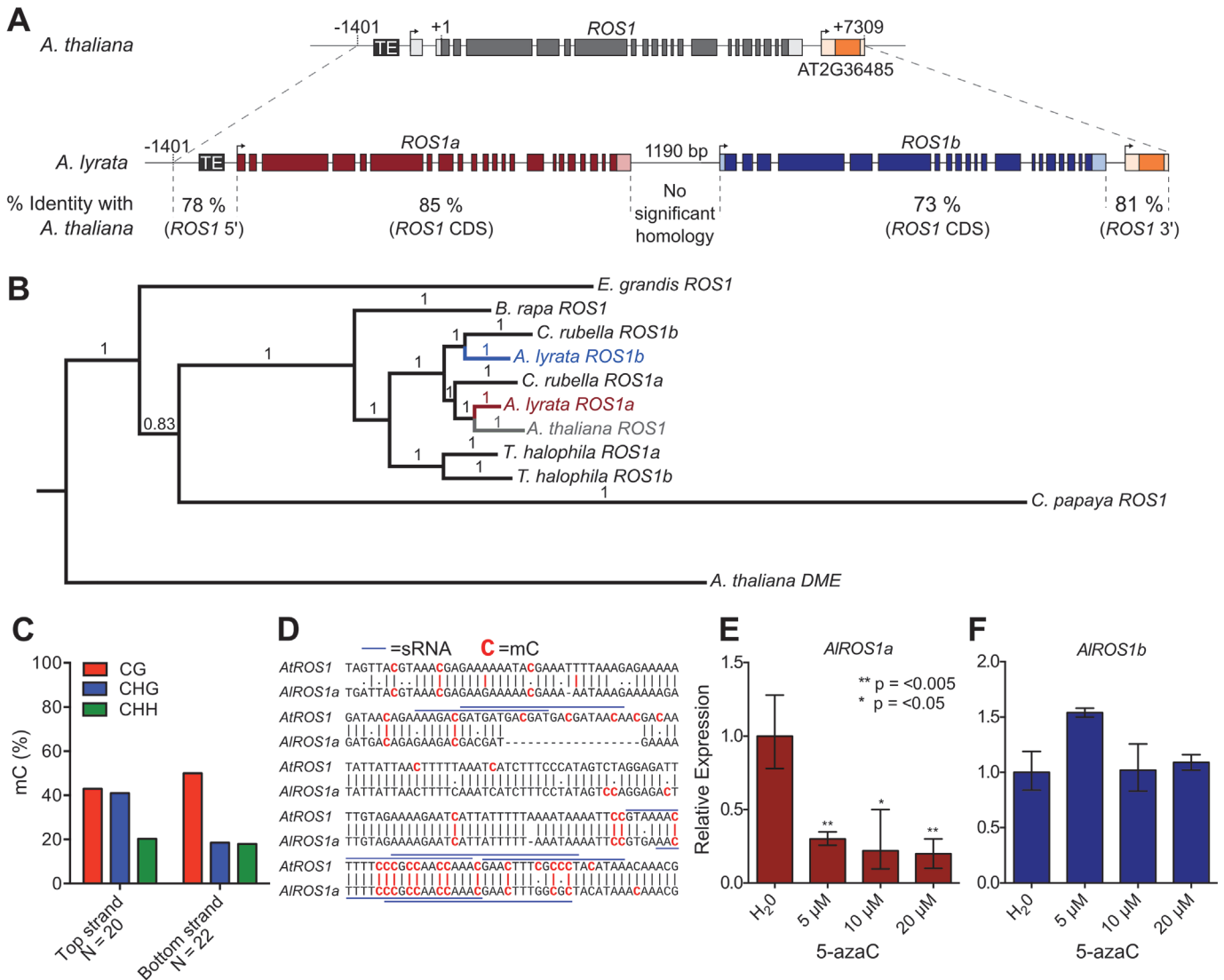
**Fig 5. ROS1 demethylates the ROS1 promoter and reduces expression.** (A) Methylation of the 5' region of ROS1 (region 1 in Fig 3) was measured in two ros1 missense mutants by bisulfite PCR. WT strains were segregating Col-0 siblings for ros1-7 and were C24 for ros1-2. N represents the number of independent clones sequenced for each BS-PCR product. (B) Relative ROS1 transcript abundance was measured in seedlings of both mutants using RT-qPCR. Data represented as mean, error bars represent standard deviation. \*p < 0.005, two-tailed t-test.

doi:10.1371/journal.pgen.1005142.g005

non-CG methylation (Fig 5A), indicating that ROS1 actively removes methylation from this region in wild-type plants. At other loci, removal of 5' methylation by ROS1 increases transcription [21]. We examined the effect of DNA demethylation by ROS1 on ROS1 transcription by performing RT-qPCR on ros1-2 and ros1-7 mutants. Because these are missense mutations, nonsense-mediated decay should not be a complicating factor in measuring transcript abundance. ROS1 transcripts were 2 to 4-fold more abundant in ros1 mutants (Fig 5B). This suggests that active demethylation by ROS1 represses transcription of ROS1, counteracting the function of the RdDM pathway, which promotes ROS1 expression. Thus ROS1 regulates the expression of its own gene, forming a negative feedback loop for demethylation activity.

### Methylation-sensitive regulation of ROS1 is conserved in other species

To determine if regulation of ROS1 by methylation might be adaptive, we assessed whether methylation-sensitive expression of ROS1 is conserved in other species. *Arabidopsis lyrata*, which diverged from *A. thaliana* approximately 10 million years ago, has two highly conserved paralogs of ROS1 in tandem in the genome, which we termed AIROS1a and AIROS1b (Fig 6A). We performed a Bayesian reconstruction of the phylogeny of ROS1 homologs within all sequenced Brassicales (Fig 6B) and found that the duplication giving rise to the two ROS1 paralogs in *A. lyrata* occurred prior to the divergence of *A. lyrata* from *A. thaliana*. AtROS1 belongs to the same clade as AIROS1a, and no true homologs to AIROS1b exist in *A. thaliana* (Fig 6B).



**Fig 6. Methylation-sensitive expression of ROS1 is evolutionarily conserved.** (A) ROS1 is locally duplicated in the closely related species *Arabidopsis lyrata*. Percentage DNA sequence identity between each paralog and *A. thaliana* ROS1 is shown for upstream, coding and downstream regions. (B) Bayesian reconstruction of the phylogeny of ROS1 homologs within Brassicales shows *AIROS1a* and *AIROS1b* diverged prior to the divergence of *A. thaliana* and *A. lyrata*. Support values are Bayesian posterior probabilities. (C) Methylation of the sequence 5' of *AIROS1a* was examined by BS-PCR. N represents the number of independent clones sequenced for each BS-PCR product. (D) Annotation of methylated cytosines in the *AtROS1* and *AIROS1a* 5' region. Blue lines annotate sequences matching sRNAs from their respective species. (E) Relative *AIROS1a* transcripts are significantly decreased when plants are grown on 5-azaC. (F) Relative *AIROS1b* transcripts levels are unaffected by growth on 5-azaC. Data represented as mean, error bars represent standard deviation. \* p < 0.05, \*\* p < 0.005, two-tailed t-test.

doi:10.1371/journal.pgen.1005142.g006

The homolog to *AIROS1b* was likely lost in the lineage that gave rise to *A. thaliana*. *AIROS1a* and *AIROS1b* share a high degree of sequence similarity in their coding region, but no significant similarity in their upstream sequences. Only *AIROS1a* has an upstream region conserved with *AtROS1* (Fig 6A), including the presence of the same 5' TE. The 5' sequences are 78% identical over the first 1.4 kb.

We performed bisulfite sequencing of the *AIROS1a* 5' region (Fig 6C) and of the exonic sequences in *AIROS1a* and *AIROS1b* that match exons 15–18 in *ROS1* (S4 Fig). Although CG methylation was present in the 3' exonic region of both paralogs, non-CG methylation was

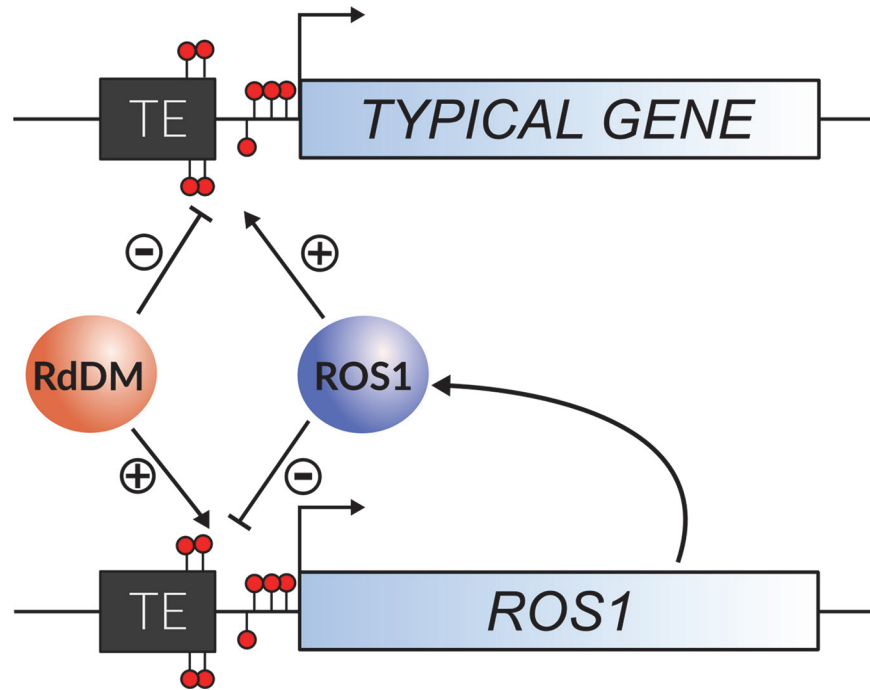
absent (S4 Fig). Additionally, unlike *A. thaliana*, we did not find any small RNAs matching these exons for either *AIROS1a* or *AIROS1b* in a small RNA dataset from *A. lyrata* flowers [34]. By contrast, the methylation profile 5' of *AIROS1a* was remarkably similar to the methylation profile 5' of *AtROS1* (Fig 6C and 6D and Fig 3). Like *AtROS1*, CG methylation in the 5' region was at an intermediate level between 40–50%, suggesting that RdDM and active DNA demethylation might also simultaneously target *AIROS1a*. Pair-wise alignment of the sequences from each species showed that the methylation was present at conserved cytosines (Fig 6D). Furthermore, we identified small RNAs from *A. lyrata* datasets [34] that are almost identical to the small RNAs associated with methylation at the 5' end of *AtROS1* (Fig 6D). The methylated sequence matching these RNAs is directly adjacent to a homolog of the *AtREP5* TE upstream of *AtROS1* (Fig 6A). These data indicate that RdDM targeting to a region 5' of the *ROS1* TSS is evolutionarily conserved.

To test whether the expression of either *AIROS1* paralog was responsive to methylation alterations, *A. lyrata* seedlings were grown on varying concentrations of 5-azaC. *AIROS1a* but not *AIROS1b* transcripts were significantly decreased in seedlings grown on 5-azaC (Fig 6E and 6F). Thus expression of the true *A. lyrata* homolog of *ROS1*, *AIROS1a*, which has similar 5' methylation and conserved small RNAs, is methylation-responsive. Together, these data suggest that the regulation of *ROS1* by RdDM and DNA demethylation at 5' sequences is conserved between *A. thaliana* and *A. lyrata*. Interestingly, in transcriptome datasets from shoot apical meristems or immature ears of *Z. mays mop1* mutants (*Mop1* is an *RDR2* homologue), expression of two DNA glycosylase genes with high homology to *AtROS1* (*DNG101* and *DNG103*) was reduced 2 to 3.3-fold in comparison to wild type [35,36]. Reduced expression of *ROS1* homologs has also been observed in the transcriptome of *Z. mays* RNA polymerase IV mutants [37]. We confirmed that DNA glycosylase expression is reduced in *mop1* leaves by RT-qPCR (S5 Fig). Both *DNG101* and *DNG103* have methylated TEs in their 5' region in all sequence contexts, suggesting that both loci could be direct targets of RdDM [38]. These data further suggest that regulation of DNA glycosylases by RdDM might be a general feature of angiosperms, and thus likely adaptive.

## Discussion

Our data demonstrate that *ROS1* functions as a self-regulating epigenetic rheostat. RdDM and DNA demethylation activities converge at the *ROS1* locus, but each activity has the opposite outcome on *ROS1* transcript abundance as compared to typical targets of these processes (Fig 7). By establishing DNA methylation at the *ROS1* locus in *rdr2* mutants (Fig 4), we have conclusively shown that methylation of the 5' sequence is sufficient to restore *ROS1* expression. Thus reduced expression of *ROS1* in *rdr2* mutants is not caused by an indirect mechanism, such as decreased expression of another gene required for *ROS1* expression or increased expression of a negative regulator of *ROS1*. While the precise mechanism by which the activity of *ROS1* is repressive and RdDM is activating remains unknown, we speculate that a protein that either negatively or positively regulates *ROS1* may exhibit differential DNA binding affinity based on methylation of the underlying *ROS1* 5' DNA sequence. Alternatively, it is possible that rather than DNA methylation itself, the act of RdDM could play a regulatory role. For example, occupancy, DNA melting or elongation by RNA polymerases IV or V could be required for positive regulatory factors to access *ROS1*. Interestingly, RdDM in an intron of the *MADS3* gene in *Petunia* has also been shown to be associated with transcriptional upregulation [39]. In this instance, it is likely that methylation of a short *cis*-element is necessary to confer increased expression.

The reversal of methylation outcomes at *ROS1* permits the genome to maintain gene expression (promoted by DNA demethylation) and genome defense (TE silencing by RdDM) in



**Fig 7. The regulation of *ROS1* by methylation acts as an epigenetic rheostat.** A schematic summarizing the roles of RdDM and ROS1 at the *ROS1* locus and other genomic targets. Demethylation by ROS1 counteracts RdDM to reduce *ROS1* expression, in opposition to its function at typical targets. This ensures that a balance of methylation and demethylation activities is maintained in the genome. (+) and (-) symbols denote a positive and negative effect on gene expression, respectively.

doi:10.1371/journal.pgen.1005142.g007

homeostatic balance. For example, if the genome were under stress from high TE transcriptional activity or invasion, RdDM activity might increase. Under these conditions, RdDM activity would promote the expression of *ROS1*, so that the activity of demethylation at target genes would be maintained in equilibrium with the activity of RdDM in the genome (Fig 7). Conversely, if RdDM were less active, *ROS1* expression would be reduced to prevent hypomethylation as a consequence of demethylation activity. The result is that the expression of *ROS1* is always maintained in balance by its autoregulation (Fig 7), which may help underpin the regulation of epigenetic homeostasis within plants and explain why spontaneous changes to methylation are generally very rare [40,41]. This homeostatic balance may be dynamically modified in certain conditions, such as fungal or bacterial infections, where active demethylation of defense genes is important for resistance [2–4]. The rheostat may also be important during normal development. In pollen, *DRM2* is expressed at a low level in microspores and sperm [8]. In agreement with our findings from *drm2* and other RdDM mutants, *ROS1* transcripts have not been detected in wild-type sperm [42]. Published methylation profiling data from pollen show that the *ROS1* 5' region is hypomethylated in sperm cells, but not in the vegetative nucleus (S6 Fig), where both *DRM2* and *ROS1* are expressed [42,43]. In the future, it will be important to determine whether disrupting the rheostat has consequences for the proper establishment of methylation patterns in sperm or in developing progeny after fertilization.

In addition to the methylation-responsive regulation of *ROS1* that we have described here, it is possible that additional mechanisms underlie epigenetic homeostasis in *Arabidopsis*. Targeting of RdDM, H3K9 methylation, and H3K27 methylation are redirected throughout the genome in *met1* mutants [20,24,44], and it has been hypothesized that this redirection may be the result of compensatory mechanisms necessary to maintain some level of integrity in gene

expression [24]. Therefore, other mechanisms may also regulate repressive histone modifications in balance with gene expression. The role of methylation in promoting *IBM1* expression [26] may be one such example. Although our experiments have focused on *Arabidopsis* species, the concept of epigenetic homeostasis might also apply more broadly to other DNA methylation systems, including those in mammals. It is known that the cancer epigenome exhibits global DNA hypomethylation and local hypermethylation [45], which is broadly similar to the methylation phenotype of a *met1* mutant. Interestingly, expression of the three *TET* enzymes, which are responsible for initiating DNA demethylation in mammals by oxidizing 5-methylcytosine, is reduced in multiple cancers [46].

We conclude that the *ROS1* locus serves as a rheostat for methylation levels. We propose that the *ROS1* epigenetic rheostat evolved to counter-balance positive feedback between DNA methylation and RdDM activity [13,14] to prevent ectopic gain of DNA methylation. The conservation of methylation-sensitive *ROS1* expression among divergent angiosperms suggests that this regulation is adaptive and could underpin how plants balance a number extremely effective, potent, and self-reinforcing silencing mechanisms while maintaining gene transcription.

## Materials and Methods

### Plant growth conditions

*Arabidopsis thaliana*, *Arabidopsis lyrata*, and *Zea mays* plants were grown in a greenhouse with 16-hour days at 21°C. For experiments performed on whole seedlings, plants were grown on 0.5 x MS medium with 5% agar. For treatment with 5-azaC, *A. thaliana* or *A. lyrata* seedlings were grown on filter paper moistened with water or 5, 10, 15 or 20 μM 5-aza-2-deoxycytidine. Fresh water or 5-azaC was added daily. The accession number for all mutant plants used in this study are in [S1 Text](#).

### Quantitative RT-PCR

Total RNA was extracted using an RNeasy Plant Mini Kit (Qiagen). RNA was extracted from whole 7-day old *Arabidopsis thaliana* seedlings for all experiments, except for experiments using 5-azaC, in which case 5-day old *A. thaliana* or *A. lyrata* seedlings were used, or experiments with transgenic lines expressing a *ROS1* inverted repeat construct, in which case rosette leaves from 21-day old plants were used. RNA was extracted from the tip of the third true leaf of maize plants. For each genotype, 3 biological replicates of at least 5 pooled individual seedlings (*Arabidopsis*) or individual plants (maize) were collected. Genomic DNA was removed using amplification-grade DNaseI (Invitrogen). cDNA was synthesized from 500 ng RNA using Superscript II reverse transcriptase (Invitrogen) according to manufacturers' instructions, selecting for polyadenylated transcripts using an oligo-dT primer. For each cDNA synthesis reaction, a control was performed without addition of reverse transcriptase to test the efficacy of the DNase treatment. Quantitative RT-PCR (RT-qPCR) was performed using Fast Sybr-Green mix (Applied Biosystems) according to manufacturers' instructions. All reactions were performed using a StepOne Plus Real-Time PCR system (Applied Biosystems). Primers were designed to have matching melting temperatures between 60–65 °C and to produce amplicons between 80–160 bp in length. All primers were used in a final concentration of 400 nM. The efficiency of all primer pairs was verified using a standard curve dilution of template cDNA prior to their use in quantification of transcripts. Melt curves were analyzed to verify the presence of one amplicon in each reaction, and representative products were also verified by agarose gel electrophoresis. Relative expression was calculated using the ddCt method as described [47]. For *Arabidopsis*, the reference transcript used for all reactions was AT1G58050, experimentally verified to be one of the most consistently abundant transcripts in

*A. thaliana* [48]. For maize, the reference transcript was *ZmEF1 $\alpha$* , defined to be the most consistent reference transcript over the majority of experimental conditions [49]. Primer sequences are available in the [S1 Text](#).

### Rapid Amplification of cDNA ends (RACE)

5' RACE of *ROS1* was performed using 10  $\mu$ g Col-0 RNA extracted from 10-day old seedlings. The 5' RACE cDNA library was synthesized using a FIRST-CHOICE RLM-RACE Kit (Ambion) according to manufacturers' instructions, with the exception that a *ROS1*-specific oligonucleotide was used to prime cDNA synthesis. RACE products were amplified using a nested PCR strategy, purified using a QIAquick gel extraction kit (Qiagen) and cloned for sequencing using a TOPO-Blunt PCR cloning kit (Invitrogen).

### Bisulfite sequencing

Genomic DNA was isolated from 7-day old seedlings or 21-day old rosette leaves using a CTAB procedure. 2  $\mu$ g DNA were sheared by sonication and used for bisulfite treatment, which was performed as described [50]. 2  $\mu$ l bisulfite treated DNA was used in PCR reactions with 2.5 U ExTaq DNA polymerase (Takara) and 0.4  $\mu$ M primers using the following cycling conditions (95 °C 3 minutes, 40 cycles of [95 °C for 15 seconds, 52 °C for 60 seconds, 72 °C for 60 seconds], 72 °C for 10 minutes). PCR products were cloned using TOPO-TA (Invitrogen) or CloneJet (Life Technologies) PCR cloning kit and individual colonies were sequenced. Sequenced products were aligned using MUSCLE [51], and methylation of each cytosine residue was calculated using CyMate [52].

### Inverted repeat transgene

The 228 bp sequence 5' of *ROS1* that is targeted by RdDM in wild-type plants was amplified and cloned into the directional entry vector pENTR-TOPO-D (Invitrogen). The sequence was then inserted twice in an inverted repeat conformation into the vector pANDA-35HK using a single LR clonase reaction as described by [53]. *rdr2* mutant plants were transformed with the inverted repeat transgene by floral dipping [54], and T<sub>1</sub> lines were screened for DNA methylation 5' of *ROS1* using a restriction enzyme assay on bisulfite treated DNA. 90% of lines screened exhibited higher DNA methylation than *rdr2* and *nrpe1* mutants. Six lines covering a range of methylated epigenotypes were selected for bisulfite sequencing and expression analysis.

### Bayesian reconstruction of phylogeny

Coding sequences for *ROS1* homologs from all fully sequenced genomes within Brassicales were downloaded from Phytozome 9.1. In addition, the coding sequence for *Arabidopsis thaliana* *DME*, which belongs to a distinct clade of DNA glycosylases [55], was included as an out-group. Sequences were aligned using Muscle 3.8 [51], and manually verified using Aliview [56]. The phylogeny was reconstructed from the aligned matrix using MrBayes 3.1.2 [57]. jModelTest [58] was used to determine the ideal model for analysis, and the general time reversible model with gamma distributed rate variation was chosen. Gaps were treated as missing data. The analysis was run for 2,500,000 generations sampling every 100 trees. By this time the average standard deviation of split frequencies had reached <0.01 and the potential scale reduction factor (PRSF) was <1.005 for all parameters. The first 25% of trees were discarded as burn-in and the output phylogeny was further analyzed and annotated using FigTree 1.4.

## Supporting Information

### S1 Text. Supplemental materials and methods.

(DOC)

**S1 Fig. *DML2* and *DML3* expression in methylation mutants.** (A) Quantification of *DML2* and *DML3* transcripts in WT (Col-0) by RT-qPCR, normalized to the abundance of *ROS1* transcripts. (B) *DML2* expression and (C) *DML3* expression in RdDM and maintenance methylation mutants. Data represented as mean, error bars represent standard deviation. Differences in mutants were not significant compared to WT ( $p > 0.01$ ).

(TIFF)

**S2 Fig. *IBM1* is not silenced in RdDM mutants.** The level of expression of the long transcript isoform of *IBM1* was measured in seedlings of two RdDM mutants by RT-qPCR. In both *rdr2* and *nRPD1a* mutants, *IBM1* transcript abundance was higher than in WT (Col-0) at  $p = < 0.05$ . Data represented as mean, error bars represent standard deviation.

(TIFF)

**S3 Fig. The *ROS1* 5' region is heavily methylated by RdDM.** (A-B) Methylation levels of the top and bottom strand of a 228 bp region upstream of the *ROS1* transcription start site were quantified using BS-PCR on DNA from wild-type Col-0 and *rdr2* mutants. Percentage methylation was calculated from the first to last methylated cytosine. N represents the number of independent clones sequenced; n represents the number of cytosines counted in the region. (C) and (D) show a portion of the cytosines analyzed from the top strand of Col-0 and *rdr2*, respectively. Filled/unfilled shapes represent methylated/unmethylated cytosines respectively. \*; dotted line indicates the 3'-most position from which methylation was quantified. The quantified region continues beyond what is shown at the 5' end. (E) The transcription start sites of *ROS1* in WT were determined using 5' RACE. The positions of transcriptional start sites identified by 5' RACE and in a genome-wide profiling study [59] are shown relative to the region of DNA methylation.

(TIFF)

**S4 Fig. *AIROS1a* and *AIROS1b* share similar coding region methylation.** DNA methylation in exons 19–20 of *AIROS1a* and exons 18–19 of *AIROS1b* (which share homology with *AtROS1* exons 17–18) was measured using BS-PCR on leaf DNA. Percentage methylation in each sequence context was calculated from the first to the last methylated cytosine. 6 CG, 2 CHG and 32 CHH sites were counted for *AIROS1a*. 7 CG, 11 CHG and 31 CHH sites were counted for *AIROS1b*.

(TIFF)

**S5 Fig. Two *ROS1* homologs are down-regulated in a maize RdDM mutant.** Transcript abundance of the 5-methylcytosine DNA glycosylases *DNG101* and *DNG103* was measured in maize plants segregating for a mutation in *Mop1*, a homolog of Arabidopsis *RDR2*, using RT-qPCR. WT is the inbred strain B73. Data are represented as mean, error bars represent standard deviation. \* $p = < 0.01$ , two-tailed t-test.

(TIFF)

**S6 Fig. *ROS1* is hypomethylated in sperm cells.** A snapshot of genome-wide methylation data from Arabidopsis pollen [43], showing the 5' region of *ROS1*. CG, CHG and CHH methylation are denoted by green, blue and red lines, respectively. VN = vegetative nucleus. SC = sperm cells.

(TIFF)

## Acknowledgments

We thank Jennifer Cooper and Christine Codomo for isolating the *ros1-7* allele from the Arabidopsis TILLING population, Nathan Springer for *mop1* maize seed, Jian-Kang Zhu for *ros1-2* seed, and Eric Richards for *vim1*; *vim2*; *vim3* seed.

## Author Contributions

Conceived and designed the experiments: BPW MG. Performed the experiments: BPW DP MG. Analyzed the data: BPW DP SH MG. Wrote the paper: BPW MG.

## References

1. Law JA, Jacobsen SE. Establishing, maintaining and modifying DNA methylation patterns in plants and animals. *Nat Rev Genet.* 2010; 11: 204–220. doi: [10.1038/nrg2719](https://doi.org/10.1038/nrg2719) PMID: [20142834](https://pubmed.ncbi.nlm.nih.gov/20142834/)
2. Downen RH, Pelizzola M, Schmitz RJ, Lister R, Downen JM, Nery JR, et al. Widespread dynamic DNA methylation in response to biotic stress. *Proc Natl Acad Sci.* 2012; 109: E2183–E2191. doi: [10.1073/pnas.1209329109](https://doi.org/10.1073/pnas.1209329109) PMID: [22733782](https://pubmed.ncbi.nlm.nih.gov/22733782/)
3. Yu A, Lepère G, Jay F, Wang J, Bapaume L, Wang Y, et al. Dynamics and biological relevance of DNA demethylation in Arabidopsis antibacterial defense. *Proc Natl Acad Sci.* 2013; 110: 2389–2394. doi: [10.1073/pnas.1211757110](https://doi.org/10.1073/pnas.1211757110) PMID: [23335630](https://pubmed.ncbi.nlm.nih.gov/23335630/)
4. Le T-N, Schumann U, Smith NA, Tiwari S, Au PC, Zhu Q-H, et al. DNA demethylases target promoter transposable elements to positively regulate stress responsive genes in Arabidopsis. *Genome Biol.* 2014; 15: 458. doi: [10.1186/s13059-014-0458-3](https://doi.org/10.1186/s13059-014-0458-3) PMID: [25228471](https://pubmed.ncbi.nlm.nih.gov/25228471/)
5. Steward N, Ito M, Yamaguchi Y, Koizumi N, Sano H. Periodic DNA Methylation in Maize Nucleosomes and Demethylation by Environmental Stress. *J Biol Chem.* 2002; 277: 37741–37746. PMID: [12124387](https://pubmed.ncbi.nlm.nih.gov/12124387/)
6. Ariel F, Jegu T, Latrasse D, Romero-Barrios N, Christ A, Benhamed M, et al. Noncoding Transcription by Alternative RNA Polymerases Dynamically Regulates an Auxin-Driven Chromatin Loop. *Mol Cell.* 2014; 55: 383–396. doi: [10.1016/j.molcel.2014.06.011](https://doi.org/10.1016/j.molcel.2014.06.011) PMID: [25018019](https://pubmed.ncbi.nlm.nih.gov/25018019/)
7. Gehring M, Bubb KL, Henikoff S. Extensive Demethylation of Repetitive Elements During Seed Development Underlies Gene Imprinting. *Science.* 2009; 324: 1447–1451. doi: [10.1126/science.1171609](https://doi.org/10.1126/science.1171609) PMID: [19520961](https://pubmed.ncbi.nlm.nih.gov/19520961/)
8. Calarco JP, Borges F, Donoghue MTA, Van Ex F, Jullien PE, Lopes T, et al. Reprogramming of DNA Methylation in Pollen Guides Epigenetic Inheritance via Small RNA. *Cell.* 2012; 151: 194–205. doi: [10.1016/j.cell.2012.09.001](https://doi.org/10.1016/j.cell.2012.09.001) PMID: [23000270](https://pubmed.ncbi.nlm.nih.gov/23000270/)
9. Gent JI, Madzima TF, Bader R, Kent MR, Zhang X, Stam M, et al. Accessible DNA and Relative Depletion of H3K9me2 at Maize Loci Undergoing RNA-Directed DNA Methylation. *Plant Cell Online.* 2014; tpc.114.130427.
10. Zheng Q, Rowley MJ, Böhmendorfer G, Sandhu D, Gregory BD, Wierzbicki AT. RNA polymerase V targets transcriptional silencing components to promoters of protein-coding genes. *Plant J.* 2013; 73: 179–189.
11. Pontier D, Picart C, Roudier F, Garcia D, Lahmy S, Azevedo J, et al. NERD, a Plant-Specific GW Protein, Defines an Additional RNAi-Dependent Chromatin-Based Pathway in Arabidopsis. *Mol Cell.* 2012; 48: 121–132. doi: [10.1016/j.molcel.2012.07.027](https://doi.org/10.1016/j.molcel.2012.07.027) PMID: [22940247](https://pubmed.ncbi.nlm.nih.gov/22940247/)
12. McCue AD, Nuthikattu S, Reeder SH, Slotkin RK. Gene Expression and Stress Response Mediated by the Epigenetic Regulation of a Transposable Element Small RNA. *PLoS Genet.* 2012; 8: e1002474. doi: [10.1371/journal.pgen.1002474](https://doi.org/10.1371/journal.pgen.1002474) PMID: [22346759](https://pubmed.ncbi.nlm.nih.gov/22346759/)
13. Johnson LM, Du J, Hale CJ, Bischof S, Feng S, Chodavarapu RK, et al. SRA- and SET-domain-containing proteins link RNA polymerase V occupancy to DNA methylation. *Nature.* 2014; 507: 124–128. doi: [10.1038/nature12931](https://doi.org/10.1038/nature12931) PMID: [24463519](https://pubmed.ncbi.nlm.nih.gov/24463519/)
14. Zhong X, Du J, Hale CJ, Gallego-Bartolome J, Feng S, Vashisht AA, et al. Molecular Mechanism of Action of Plant DRM De Novo DNA Methyltransferases. *Cell.* 2014; 157: 1050–1060. doi: [10.1016/j.cell.2014.03.056](https://doi.org/10.1016/j.cell.2014.03.056) PMID: [24855943](https://pubmed.ncbi.nlm.nih.gov/24855943/)
15. Lindroth AM, Shultis D, Jasencakova Z, Fuchs J, Johnson L, Schubert D, et al. Dual histone H3 methylation marks at lysines 9 and 27 required for interaction with CHROMOMETHYLASE3. *EMBO J.* 2004; 23: 4286–4296. PMID: [15457214](https://pubmed.ncbi.nlm.nih.gov/15457214/)
16. Zemach A, Kim MY, Hsieh P-H, Coleman-Derr D, Eshed-Williams L, Thao K, et al. The Arabidopsis Nucleosome Remodeler DDM1 Allows DNA Methyltransferases to Access H1-Containing Heterochromatin. *Cell.* 2013; 153: 193–205. doi: [10.1016/j.cell.2013.02.033](https://doi.org/10.1016/j.cell.2013.02.033) PMID: [23540698](https://pubmed.ncbi.nlm.nih.gov/23540698/)



17. Stroud H, Do T, Du J, Zhong X, Feng S, Johnson L, et al. Non-CG methylation patterns shape the epigenetic landscape in Arabidopsis. *Nat Struct Mol Biol.* 2014; 21: 64–72. doi: [10.1038/nsmb.2735](https://doi.org/10.1038/nsmb.2735) PMID: [24336224](https://pubmed.ncbi.nlm.nih.gov/24336224/)
18. Wang X, Weigel D, Smith LM. Transposon Variants and Their Effects on Gene Expression in Arabidopsis. *PLoS Genet.* 2013; 9: e1003255. doi: [10.1371/journal.pgen.1003255](https://doi.org/10.1371/journal.pgen.1003255) PMID: [23408902](https://pubmed.ncbi.nlm.nih.gov/23408902/)
19. Penterman J, Zilberman D, Huh JH, Ballinger T, Henikoff S, Fischer RL. DNA demethylation in the Arabidopsis genome. *Proc Natl Acad Sci.* 2007; 104: 6752–6757. PMID: [17409185](https://pubmed.ncbi.nlm.nih.gov/17409185/)
20. Lister R, O'Malley RC, Tonti-Filippini J, Gregory BD, Berry CC, Millar AH, et al. Highly Integrated Single-Base Resolution Maps of the Epigenome in Arabidopsis. *Cell.* 2008; 133: 523–536. doi: [10.1016/j.cell.2008.03.029](https://doi.org/10.1016/j.cell.2008.03.029) PMID: [18423832](https://pubmed.ncbi.nlm.nih.gov/18423832/)
21. Yamamuro C, Miki D, Zheng Z, Ma J, Wang J, Yang Z, et al. Overproduction of stomatal lineage cells in Arabidopsis mutants defective in active DNA demethylation. *Nat Commun.* 2014; 5.
22. Zilberman D, Gehring M, Tran RK, Ballinger T, Henikoff S. Genome-wide analysis of Arabidopsis thaliana DNA methylation uncovers an interdependence between methylation and transcription. *Nat Genet.* 2007; 39: 61–69. PMID: [17128275](https://pubmed.ncbi.nlm.nih.gov/17128275/)
23. Huettel B, Kanno T, Daxinger L, Aufsatz W, Matzke AJM, Matzke M. Endogenous targets of RNA-directed DNA methylation and Pol IV in Arabidopsis. *EMBO J.* 2006; 25: 2828–2836. PMID: [16724114](https://pubmed.ncbi.nlm.nih.gov/16724114/)
24. Mathieu O, Reinders J, Čaikovski M, Smathajitt C, Paszkowski J. Transgenerational Stability of the Arabidopsis Epigenome Is Coordinated by CG Methylation. *Cell.* 2007; 130: 851–862. PMID: [17803908](https://pubmed.ncbi.nlm.nih.gov/17803908/)
25. Penterman J, Uzawa R, Fischer RL. Genetic Interactions between DNA Demethylation and Methylation in Arabidopsis. *Plant Physiol.* 2007; 145: 1549–1557. PMID: [17951456](https://pubmed.ncbi.nlm.nih.gov/17951456/)
26. Rigal M, Kevei Z, Pélissier T, Mathieu O. DNA methylation in an intron of the IBM1 histone demethylase gene stabilizes chromatin modification patterns. *EMBO J.* 2012; 31: 2981–2993. doi: [10.1038/emboj.2012.141](https://doi.org/10.1038/emboj.2012.141) PMID: [22580822](https://pubmed.ncbi.nlm.nih.gov/22580822/)
27. Bernatavichute YV, Zhang X, Cokus S, Pellegrini M, Jacobsen SE. Genome-Wide Association of Histone H3 Lysine Nine Methylation with CHG DNA Methylation in Arabidopsis thaliana. *PLoS ONE.* 2008; 3: e3156. doi: [10.1371/journal.pone.0003156](https://doi.org/10.1371/journal.pone.0003156) PMID: [18776934](https://pubmed.ncbi.nlm.nih.gov/18776934/)
28. Zhong X, Hale CJ, Law JA, Johnson LM, Feng S, Tu A, et al. DDR complex facilitates global association of RNA polymerase V to promoters and evolutionarily young transposons. *Nat Struct Mol Biol.* 2012; 19: 870–875. doi: [10.1038/nsmb.2354](https://doi.org/10.1038/nsmb.2354) PMID: [22864289](https://pubmed.ncbi.nlm.nih.gov/22864289/)
29. Rajagopalan R, Vaucheret H, Trejo J, Bartel DP. A diverse and evolutionarily fluid set of microRNAs in Arabidopsis thaliana. *Genes Dev.* 2006; 20: 3407–3425. PMID: [17182867](https://pubmed.ncbi.nlm.nih.gov/17182867/)
30. Pignatta D, Erdmann RM, Scheer E, Picard CL, Bell GW, Gehring M. Natural epigenetic polymorphisms lead to intraspecific variation in Arabidopsis gene imprinting. *eLife.* 2014; 3: e03198. doi: [10.7554/eLife.03198](https://doi.org/10.7554/eLife.03198) PMID: [24994762](https://pubmed.ncbi.nlm.nih.gov/24994762/)
31. Luff B, Pawlowski L, Bender J. An inverted repeat triggers cytosine methylation of identical sequences in Arabidopsis. *Mol Cell.* 1999; 3: 505–511. PMID: [10230403](https://pubmed.ncbi.nlm.nih.gov/10230403/)
32. Gong Z, Morales-Ruiz T, Ariza RR, Roldán-Arjona T, David L, Zhu J-K. ROS1, a Repressor of Transcriptional Gene Silencing in Arabidopsis, Encodes a DNA Glycosylase/Lyase. *Cell.* 2002; 111: 803–814. PMID: [12526807](https://pubmed.ncbi.nlm.nih.gov/12526807/)
33. Till BJ, Reynolds SH, Greene EA, Codomo CA, Enns LC, Johnson JE, et al. Large-Scale Discovery of Induced Point Mutations With High-Throughput TILLING. *Genome Res.* 2003; 13: 524–530. PMID: [12618384](https://pubmed.ncbi.nlm.nih.gov/12618384/)
34. Fahlgren N, Jogdeo S, Kasschau KD, Sullivan CM, Chapman EJ, Laubinger S, et al. MicroRNA Gene Evolution in Arabidopsis lyrata and Arabidopsis thaliana. *Plant Cell Online.* 2010; 22: 1074–1089. doi: [10.1105/tpc.110.073999](https://doi.org/10.1105/tpc.110.073999) PMID: [20407027](https://pubmed.ncbi.nlm.nih.gov/20407027/)
35. Jia Y, Lisch DR, Ohtsu K, Scanlon MJ, Nettleton D, Schnable PS. Loss of RNA-Dependent RNA Polymerase 2 (RDR2) Function Causes Widespread and Unexpected Changes in the Expression of Transposons, Genes, and 24-nt Small RNAs. *PLoS Genet.* 2009; 5: e1000737. doi: [10.1371/journal.pgen.1000737](https://doi.org/10.1371/journal.pgen.1000737) PMID: [19936292](https://pubmed.ncbi.nlm.nih.gov/19936292/)
36. Madzima TF, Huang J, McGinnis KM. Chromatin structure and gene expression changes associated with loss of MOP1 activity in Zea mays. *Epigenetics.* 2014; 9: 1047–1059. doi: [10.4161/epi.29022](https://doi.org/10.4161/epi.29022) PMID: [24786611](https://pubmed.ncbi.nlm.nih.gov/24786611/)
37. Erhard KF, Talbot J-ERB, Deans NC, McClish AE, Hollick JB. Nascent Transcription Affected by RNA Polymerase IV in Zea mays. *Genetics.* 2015; genetics.115.174714.
38. Li Q, Eichten SR, Hermanson PJ, Zaunbrecher VM, Song J, Wendt J, et al. Genetic Perturbation of the Maize Methylome. *Plant Cell Online.* 2014; 26: 4602–4616. doi: [10.1105/tpc.114.133140](https://doi.org/10.1105/tpc.114.133140) PMID: [25527708](https://pubmed.ncbi.nlm.nih.gov/25527708/)

39. Shibuya K, Fukushima S, Takatsuji H. RNA-directed DNA methylation induces transcriptional activation in plants. *Proc Natl Acad Sci*. 2009; 106: 1660–1665. doi: [10.1073/pnas.0809294106](https://doi.org/10.1073/pnas.0809294106) PMID: [19164525](https://pubmed.ncbi.nlm.nih.gov/19164525/)
40. Becker C, Hagmann J, Müller J, Koenig D, Stegle O, Borgwardt K, et al. Spontaneous epigenetic variation in the *Arabidopsis thaliana* methylome. *Nature*. 2011; 480: 245–249. doi: [10.1038/nature10555](https://doi.org/10.1038/nature10555) PMID: [22057020](https://pubmed.ncbi.nlm.nih.gov/22057020/)
41. Schmitz RJ, Schultz MD, Lewsey MG, O'Malley RC, Urich MA, Libiger O, et al. Transgenerational Epigenetic Instability Is a Source of Novel Methylation Variants. *Science*. 2011; 334: 369–373. doi: [10.1126/science.1212959](https://doi.org/10.1126/science.1212959) PMID: [21921155](https://pubmed.ncbi.nlm.nih.gov/21921155/)
42. Schoft VK, Chumak N, Choi Y, Hannon M, Garcia-Aguilar M, Machlicova A, et al. Function of the DEMETER DNA glycosylase in the *Arabidopsis thaliana* male gametophyte. *Proc Natl Acad Sci*. 2011; 108: 8042–8047. doi: [10.1073/pnas.1105117108](https://doi.org/10.1073/pnas.1105117108) PMID: [21518889](https://pubmed.ncbi.nlm.nih.gov/21518889/)
43. Ibarra CA, Feng X, Schoft VK, Hsieh T-F, Uzawa R, Rodrigues JA, et al. Active DNA Demethylation in Plant Companion Cells Reinforces Transposon Methylation in Gametes. *Science*. 2012; 337: 1360–1364. doi: [10.1126/science.1224839](https://doi.org/10.1126/science.1224839) PMID: [22984074](https://pubmed.ncbi.nlm.nih.gov/22984074/)
44. Deleris A, Stroud H, Bernatavichute Y, Johnson E, Klein G, Schubert D, et al. Loss of the DNA Methyltransferase MET1 Induces H3K9 Hypermethylation at PcG Target Genes and Redistribution of H3K27 Trimethylation to Transposons in *Arabidopsis thaliana*. *PLoS Genet*. 2012; 8: e1003062. doi: [10.1371/journal.pgen.1003062](https://doi.org/10.1371/journal.pgen.1003062) PMID: [23209430](https://pubmed.ncbi.nlm.nih.gov/23209430/)
45. Baylin SB, Jones PA. A decade of exploring the cancer epigenome—biological and translational implications. *Nat Rev Cancer*. 2011; 11: 726–734. doi: [10.1038/nrc3130](https://doi.org/10.1038/nrc3130) PMID: [21941284](https://pubmed.ncbi.nlm.nih.gov/21941284/)
46. Yang H, Liu Y, Bai F, Zhang J-Y, Ma S-H, Liu J, et al. Tumor development is associated with decrease of TET gene expression and 5-methylcytosine hydroxylation. *Oncogene*. 2013; 32: 663–669. doi: [10.1038/onc.2012.67](https://doi.org/10.1038/onc.2012.67) PMID: [22391558](https://pubmed.ncbi.nlm.nih.gov/22391558/)
47. Livak KJ, Schmittgen TD. Analysis of Relative Gene Expression Data Using Real-Time Quantitative PCR and the 2-ddCt Method. *Methods*. 2001; 25: 402–408. PMID: [11846609](https://pubmed.ncbi.nlm.nih.gov/11846609/)
48. Czechowski T, Stitt M, Altmann T, Udvardi MK, Scheible W-R. Genome-Wide Identification and Testing of Superior Reference Genes for Transcript Normalization in *Arabidopsis*. *Plant Physiol*. 2005; 139: 5–17. PMID: [16166256](https://pubmed.ncbi.nlm.nih.gov/16166256/)
49. Lin Y, Zhang C, Lan H, Gao S, Liu H, Liu J, et al. Validation of Potential Reference Genes for qPCR in Maize across Abiotic Stresses, Hormone Treatments, and Tissue Types. *PLoS ONE*. 2014; 9: e95445. doi: [10.1371/journal.pone.0095445](https://doi.org/10.1371/journal.pone.0095445) PMID: [24810581](https://pubmed.ncbi.nlm.nih.gov/24810581/)
50. Xiao W, Gehring M, Choi Y, Margossian L, Pu H, Harada JJ, et al. Imprinting of the MEA Polycomb Gene Is Controlled by Antagonism between MET1 Methyltransferase and DME Glycosylase. *Dev Cell*. 2003; 5: 891–901. PMID: [14667411](https://pubmed.ncbi.nlm.nih.gov/14667411/)
51. Edgar RC. MUSCLE: multiple sequence alignment with high accuracy and high throughput. *Nucleic Acids Res*. 2004; 32: 1792–1797. PMID: [15034147](https://pubmed.ncbi.nlm.nih.gov/15034147/)
52. Hetzl J, Foerster AM, Raidl G, Scheid OM. CyMATE: a new tool for methylation analysis of plant genomic DNA after bisulphite sequencing. *Plant J*. 2007; 51: 526–536. PMID: [17559516](https://pubmed.ncbi.nlm.nih.gov/17559516/)
53. Miki D, Shimamoto K. Simple RNAi Vectors for Stable and Transient Suppression of Gene Function in Rice. *Plant Cell Physiol*. 2004; 45: 490–495. PMID: [15111724](https://pubmed.ncbi.nlm.nih.gov/15111724/)
54. Clough SJ, Bent AF. Floral dip: a simplified method for *Agrobacterium*-mediated transformation of *Arabidopsis thaliana*. *Plant J*. 1998; 16: 735–743. PMID: [10069079](https://pubmed.ncbi.nlm.nih.gov/10069079/)
55. Zemach A, Kim MY, Silva P, Rodrigues JA, Dotson B, Brooks MD, et al. Local DNA hypomethylation activates genes in rice endosperm. *Proc Natl Acad Sci*. 2010; 107: 18729–18734. doi: [10.1073/pnas.1009695107](https://doi.org/10.1073/pnas.1009695107) PMID: [20937895](https://pubmed.ncbi.nlm.nih.gov/20937895/)
56. Larsson A. AliView: a fast and lightweight alignment viewer and editor for large datasets. *Bioinformatics*. 2014; btu531.
57. Ronquist F, Huelsenbeck JP. MrBayes 3: Bayesian phylogenetic inference under mixed models. *Bioinformatics*. 2003; 19: 1572–1574. PMID: [12912839](https://pubmed.ncbi.nlm.nih.gov/12912839/)
58. Posada D. jModelTest: Phylogenetic Model Averaging. *Mol Biol Evol*. 2008; 25: 1253–1256. doi: [10.1093/molbev/msn083](https://doi.org/10.1093/molbev/msn083) PMID: [18397919](https://pubmed.ncbi.nlm.nih.gov/18397919/)
59. Morton T, Petricka J, Corcoran DL, Li S, Winter CM, et al. Paired-End Analysis of Transcription Start Sites in *Arabidopsis* Reveals Plant-Specific Promoter Signatures. *Plant Cell*. 2014; 26: 2746–2760. doi: [10.1105/tpc.114.125617](https://doi.org/10.1105/tpc.114.125617) PMID: [25035402](https://pubmed.ncbi.nlm.nih.gov/25035402/)